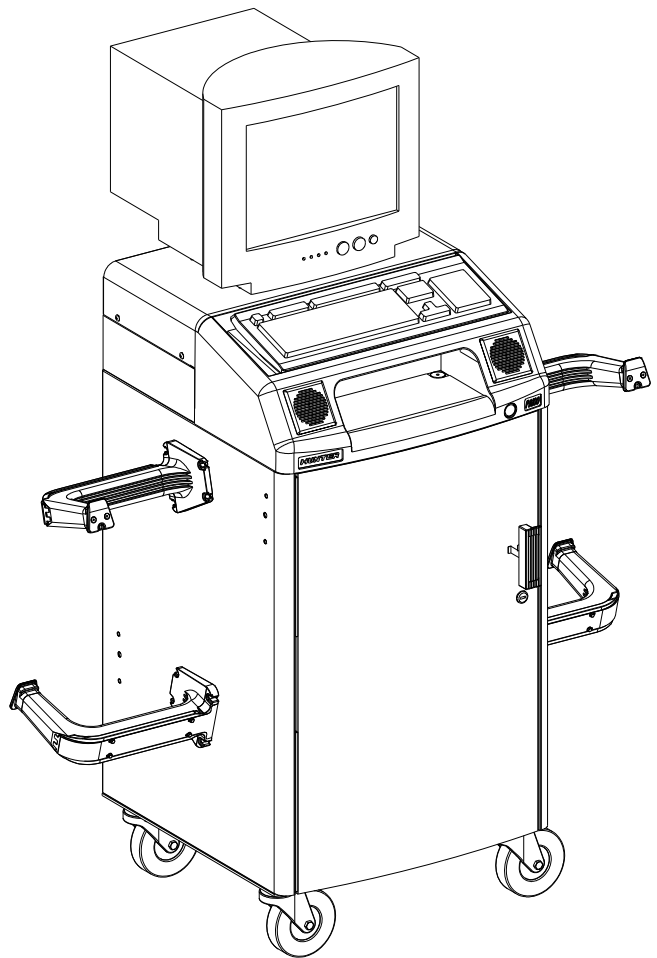
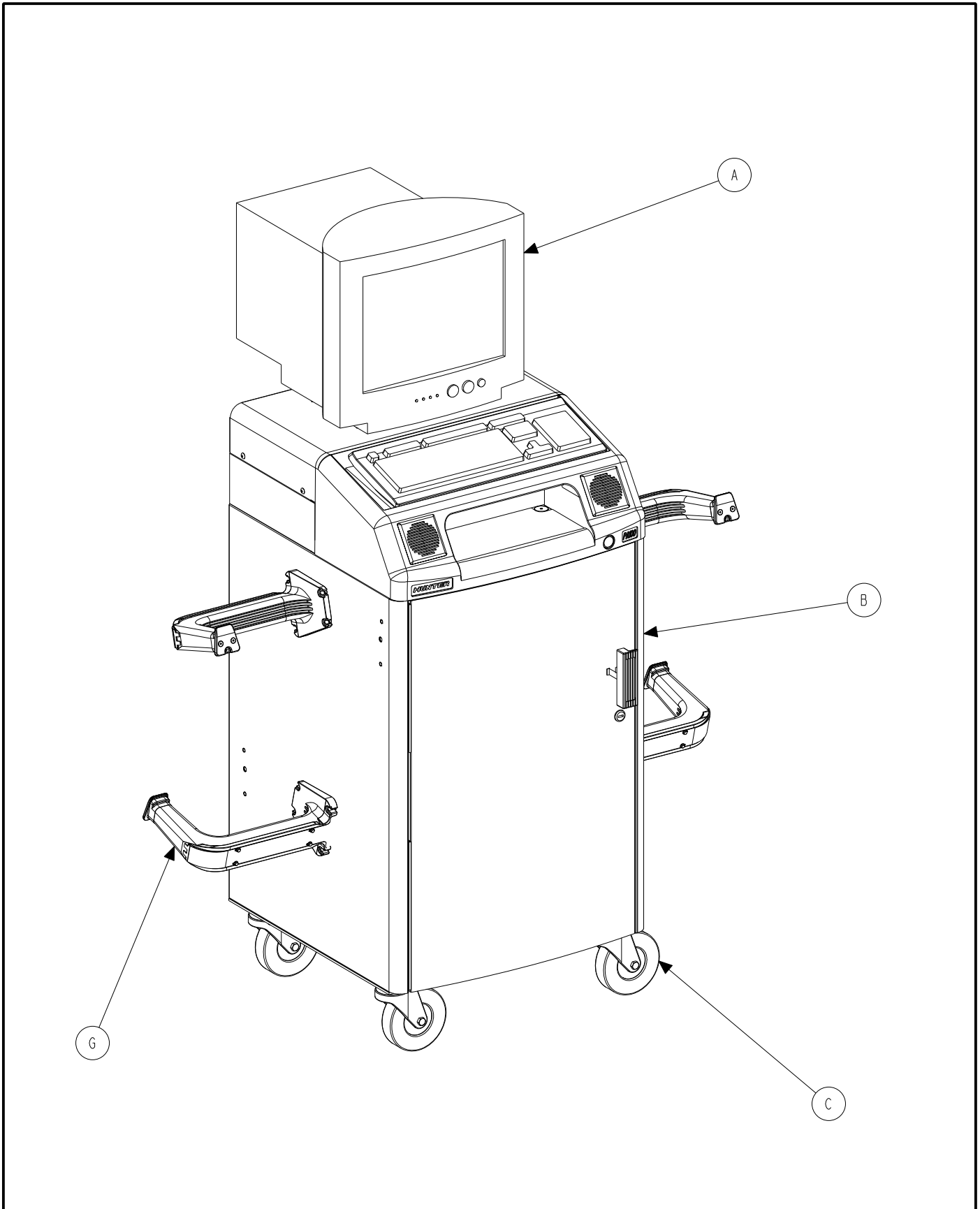


PA131



PA100

## PA100 AND PA131 MOBILE CABINET

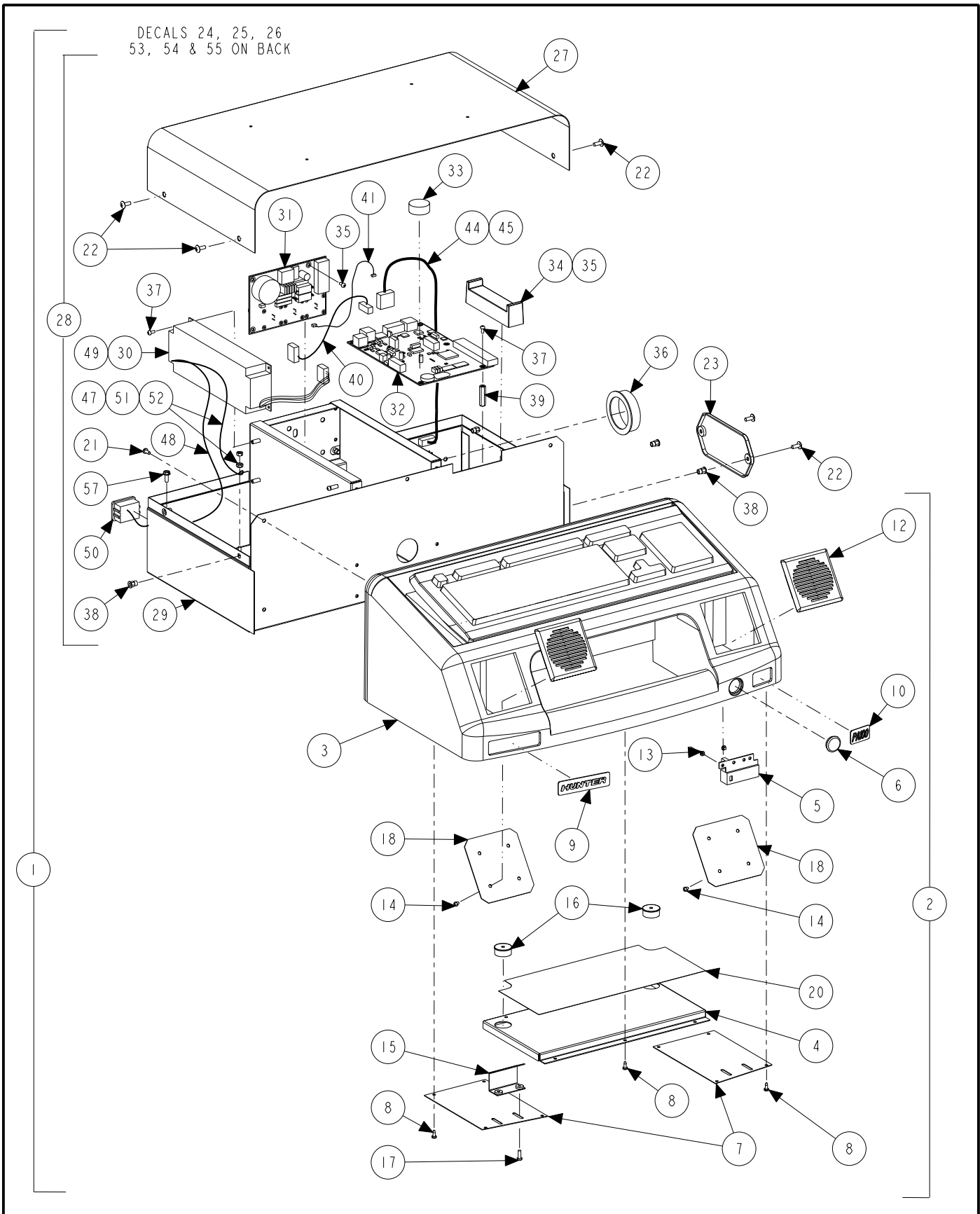


**PA100 AND PA131 MOBILE CABINET**  
REFER TO NEXT SHEET FOR PARTS DESCRIPTION LISTING

## PARTS DESCRIPTION LISTING

Index No.	Part Number	Description
A	227-74-2	DISPLAY ASSEMBLY, 17 INCH VGA MONITOR (Sheet 4)
OR	227-89-2	DISPLAY-17 INCH LCD (Sheet 4)
B	30-425-1-PPP	CABINET, MOBILE PA100 (Sheet 3 and 5)
C	158-82-2	WHEEL, CABINET CASTER PACKAGE (Sheet 5)
D	146-55-1	CONTROL ASSEMBLY, REMOTE WITH ZOOM (Not Illustrated) (Form 4-39)
E	WA15-S	BRAKE PEDAL DEPRESSOR (Not Illustrated)
F	28-75-1	HOLDER, STEERING WHEEL (Not Illustrated)
G	117-180-1	HANGER, DSP500 RIGHT-FRONT/LEFT-REAR WITH CHARGING (Sheet 6)
AND	117-181-1	HANGER, DSP500 LEFT-FRONT/RIGHT-REAR WITH CHARGING (Sheet 6)
OR	117-178-1	HANGER, DSP500 RIGHT-FRONT/LEFT-REAR WITHOUT CHARGING (Sheet 6)
AND	117-179-1	HANGER, DSP500 LEFT-FRONT/RIGHT-REAR WITHOUT CHARGING (Sheet 6)

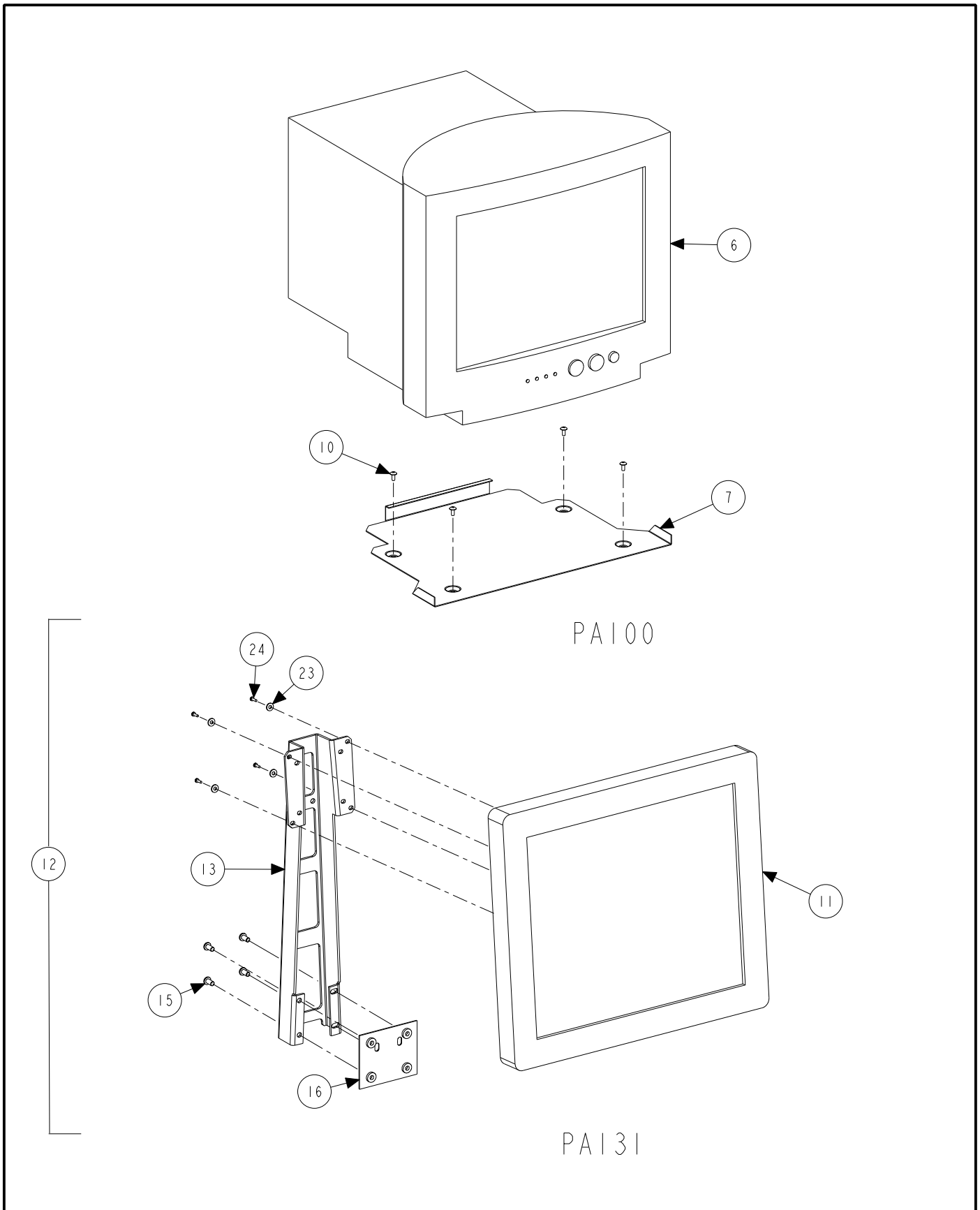
DECALS 24, 25, 26  
53, 54 & 55 ON BACK



**PA100 AND PA131 MOBILE CABINET**  
REFER TO NEXT SHEET FOR PARTS DESCRIPTION LISTING

## PARTS DESCRIPTION LISTING

Index No.	Part Number	Description	Qty.
1	30-422-1	CONSOLE, PA100 (Consisting Of:)	1
2	11-1196-1	SUPPORT, KEYBOARD ASSEMBLY PA100	1
3	11-1040-2	SUPPORT, KEYBOARD S811	1
4	11-1195-005	SUPPORT, MOUSE SURFACE PA100	1
5	45-911-1	PC ASSEMBLY, IR RECEIVER, SMT	1
6	69-685-2	COVER, REMOTE RECEIVER	1
7	51-1948-005	PLATE, SPEAKER COVER S811	2
8	75-495-2	SCREW, SELF TAPPING SCREW 6 X .38 PR HILO BZ	14
9	24-56-2	NAMEPLATE, HUNTER	1
10	24-142-2	NAMEPLATE, PA100	1
OR	24-147-2	NAMEPLATE, PA130	1
11	162-20-2	ADHESIVE, CYANOACRYLATE (Not Illustrated)	AR
12	69-1042-2	COVER, SPEAKER	2
13	75-437-2	PAN HEAD MACHINE SCREWS 6 X .25 INCH TRILOBULAR	2
14	75-16-2	ROUND HEAD MACHINE SCREW 6-32 X 1/4 INCH	8
15	14-1017-1-005	BRACKET ASSEMBLY, RADIO RETAINER	1
16	113-253-2	BUSHING, HEYCO 2137	2
17	75-26-2	ROUND HEAD MACHINE SCREW 8-32 X .50	2
18	51-1972-005	PLATE, BACKING SPEAKER COVER	2
19	38-761-1	CABLE, P111/P211 REMOTE RECEIVER	1
20	64-157-2	PAD, MOUSE SURFACE S-CABINET	1
21	75-32-2	ROUND HEAD MACHINE SCREW 8-32 X 3/8 INCH	5
22	75-312-2	TRUSS HEAD MACHINE SCREW 10-32X1/2 INCH	8
23	69-1184-2	COVER, PROGRAM CARTRIDGE PA100	1
24	24-54-2	NAMEPLATE, PATENT LABEL (Not Illustrated)	1
25	128-479-2	DECAL, CE COMPLIANCE (Not Illustrated)	1
26	128-158-2	DECAL, SERVICE WARNING (Not Illustrated)	1
27	69-1268-005	COVER, PA100 CONSOLE	1
28	11-1292-1	SUPPORT ASSEMBLY, MONITOR	1
29	11-1293-1-005	SUPPORT ASSEMBLY, MONITOR SUPTPA100	1
30	232-231-2	POWER SUPPLY, 12 VOLT, 150 WATT PA100	1
31	45-1245-1	PCA-ROCK HOPPER POWER G2	1
32	45-1111-1	PCA-ROCK HOPPER CONSOLE (Includes:)	1
33	194-24-2	BATTERY, COIN CELL 3V	
34	104-155-2	GUIDE, PROGRAM CARTRIDGE	1
35	75-359-2	PAN HEAD MACHINE SCREWS 6 X 3/8 INCH TRILOBULAR	14
36	113-199-2	BUSHING, HEYCO #2420	3
37	75-162-2	ROUND HEAD MACHINE SCREW 6-32 X .31	12
38	76-415-2	NUT, HEX INSERT 10-32	8
39	46-576-2	SPACER, 5/16 HEX 1.25 INCH LONG 6-32 THREAD	6
40	38-1027-1	CABLE ASSEMBLY INTERCONNECTOR PA100	1
41	37-558-1	WIRE ASSEMBLY BEEPER 9200	1
42	94-23-2	TIE-HOLDER SNAP IN (Not Illustrated)	4
43	94-11-2	TIE-CABLE (Not Illustrated)	6
44	38-931-2	CABLE, GSP9700 VIDEO EXTENDER	1
45	75-378-2	SCREW, DSUB JACKSOCKET 4-40	2
46	128-511-2	DECAL, GROUND (EARTH) (Not Illustrated)	1
47	37-576-1	WIRE ASSEMBLY, PA100 POWER TO GROUND	1
48	37-577-1	WIRE ASSEMBLY, INLET TO POWER SUPPLY	1
49	37-578-1	WIRE ASSEMBLY, POWER SUPPLY TO BURNDY	1
50	18-513-2	SWITCH, POWER INLET MODULE	1
51	76-71-2	NUT, KEPS 8-32	2
52	76-343-2	NUT, LOCK 8-32 NYLON INSERT	2
53	128-156-2	DECAL, CABINET LOCATION WARNING (Not Illustrated)	1
54	128-1120-2	DECAL, ETL LISTING MARK (Not Illustrated)	1
55	24-51-2	NAMEPLATE, HUNTER MODEL & PART (Not Illustrated)	1
56	128-578-2	DECAL, EARTH GROUND WARNING (Not Illustrated)	1
57	75-413-2	SCREW, SELF TAPPING SCREW 10-32 X .50 INCH HEX WASHER HEAD	6

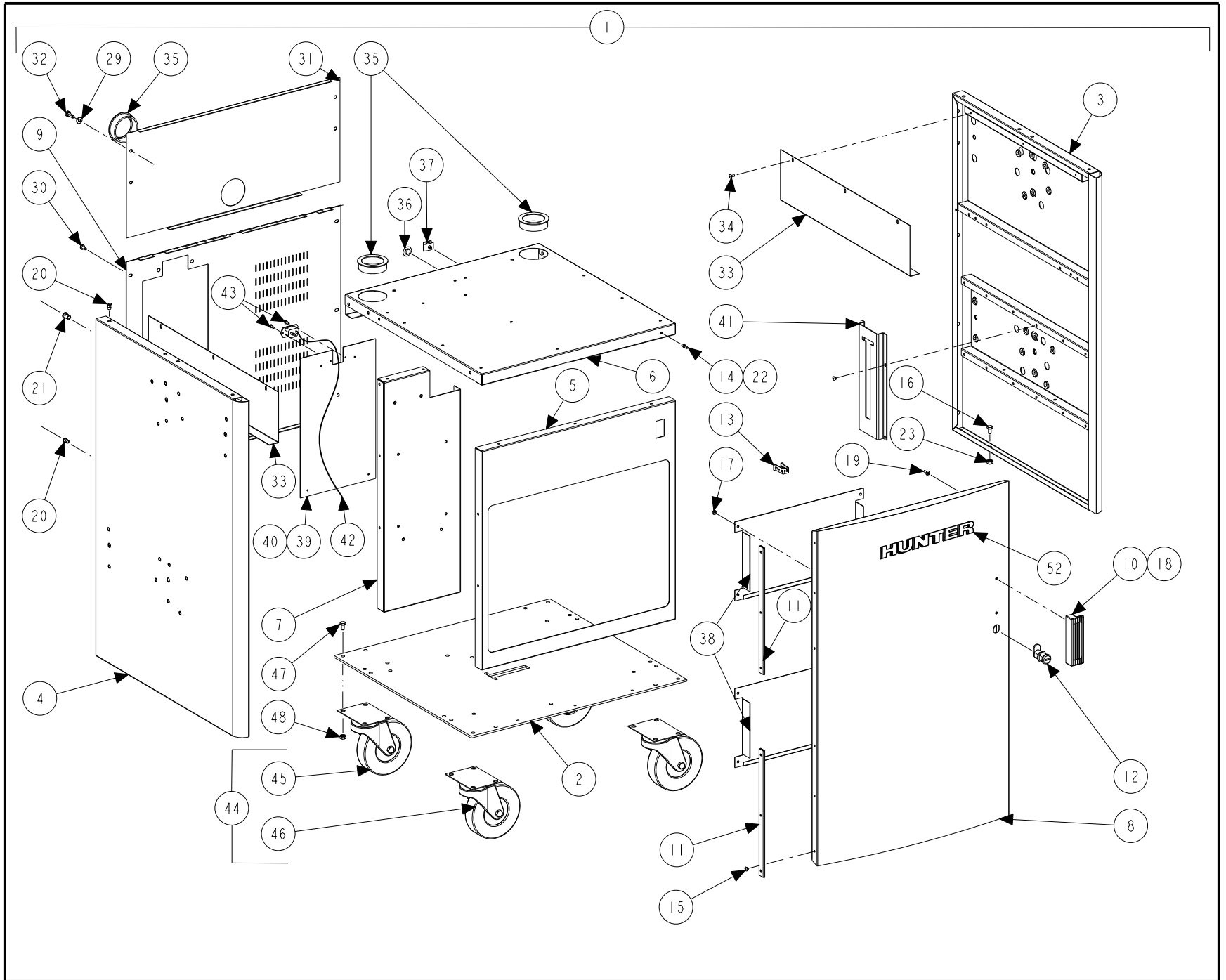


**PA100 AND PA131 MOBILE CABINET**  
REFER TO NEXT SHEET FOR PARTS DESCRIPTION LISTING

## PARTS DESCRIPTION LISTING

Index No.	Part Number	Description	Qty.
<b>PERIPHERALS AND CABLES</b>			
1	232-198-2	ELECTRONIC ASSEMBLY-USB MOUSE OPTICAL (Not Illustrated)	1
2	18-490-1-00	SWITCH, ALIGNER KEYBOARD USB (Not Illustrated)	1
3	38-954-2	CABLE, USB A-TO-B (Not Illustrated)	1
4	38-428-2	CABLE, 18/3 SO/STO CONSOLE POWER (Not Illustrated)	1
5	38-911-2	CABLE, MONITOR POWER TO PC POWER (Not Illustrated)	1
<b>PA100 - 17 INCH CRT AND SUPPORT PLATE</b>			
6	227-74-2	DISPLAY ASSEMBLY, 17 INCH VGA MONITOR	1
7	51-1950-002	PLATE, LITE-ON (E1770) CRT 17 INCH SUPPORT (Depends on Model of CRT)	1
OR	51-1606-002	PLATE, SAMPO CRT 17 INCH SUPPORT	1
OR	51-1771-1-002	PLATE, TATUNG (C7BZR) CRT 17 INCH SUPPORT	1
OR	51-1887-002	PLATE, TATUNG (C7ESR) CRT 17 INCH SUPPORT	1
OR	51-1909-1-002	PLATE, SAMSUNG (750S) CRT 17 INCH SUPPORT	1
OR	51-1945-1-002	PLATE, SAMSUNG (750S) CRT 17 INCH SUPPORT (RECEIVED AFTER 01-01-02)	1
OR	51-2312-005	PLATE, VIEWSONIC (E70FB) CRT 17 INCH SUPPORT	1
OR	51-2120-1-002	PLATE, NEC (AS700BK) CRT 17 INCH SUPPORT	1
8	28-89-2	FASTENER, VELCRO 2" LOOP SIDE (Not Illustrated)	3
9	28-90-2	FASTENER, VELCRO 2" HOOK SIDE (Not Illustrated)	3
10	75-401-2	TRUSS HEAD SHEET METAL SCREW 10X1/2 PR TPAB BO	4
<b>PA131 - 17 INCH LCD AND SUPPORTING BRACKET</b>			
11	227-89-2	DISPLAY, 17 INCH LCD	1
12	20-2190-1	KIT, MOUNTING ONE PIECE ARM LCD (Consisting Of:)	1
13	103-178-005	ARM, FLATPANEL MONITOR ONE PIECE	1
14	94-38-2	TIE CABLE	2
15	75-481-2	SOCKET BUTTON HEAD CAP SCREW 1/4-20 X .50 INCH	4
16	14-1024-1-005	BRACKET ASSEMBLY, LCD SUPPORT	1
17	70-143-2	HARNESS, SPIRAL WRAP .25 INCH OUTSIDE DIAMETER BLACK	18 in.
18	28-89-2	FASTENER, VELCRO 2 INCH LOOP SIDE	1
19	28-90-2	FASTENER, VELCRO 2 INCH HOOK SIDE	1
20	75-452-2	SOCKET BUTTON HEAD CAP SCREW 1/4-20 X 1.50 INCH	4
21	77-13-2	WASHER, LOCK 1/4 INCH INTERNAL TOOTH	4
22	76-85-2	NUT, KEPS 1/4-20	4
23	77-46-2	WASHER, FLAT 8	12
24	75-659-2	PAN HEAD MACHINE SCREW M4 X .7 X 12 MM	4

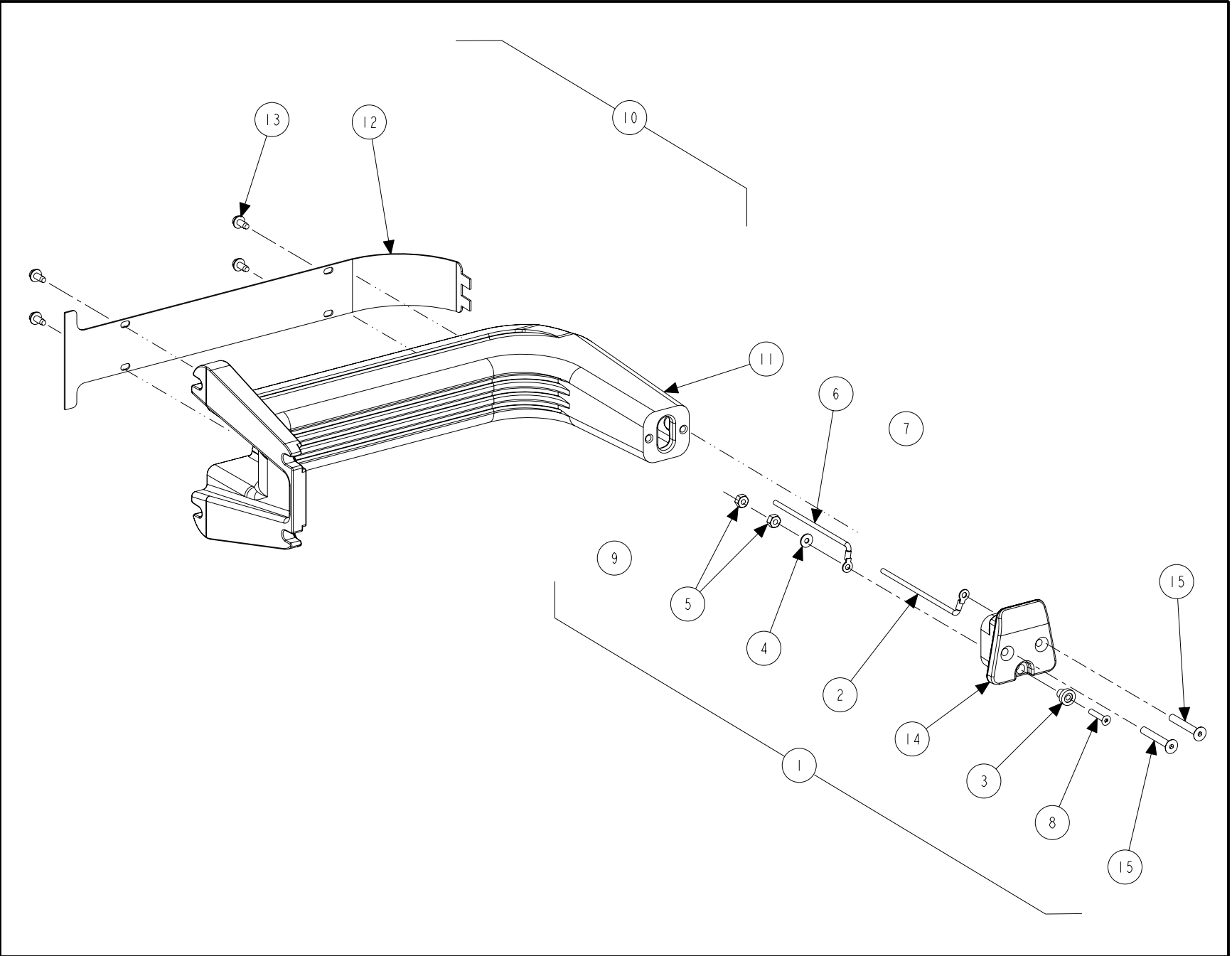
**PA100 AND PA131 MOBILE CABINET**  
REFER TO NEXT SHEET FOR PARTS DESCRIPTION LISTING





## PARTS DESCRIPTION LISTING

Index No.	Part Number	Description	Qty.
1	30-425-1	CABINET, MOBILE PA100 (Consisting Of)	1
2	72-348-005	BASE, S811 ALIGNER	1
3	71-174-1-PPP	PANEL ASSEMBLY, RIGHT HAND S811	1
4	71-175-1-PPP	PANEL ASSEMBLY, LEFT HAND S811	1
5	73-1001-PPP	PANEL FRONT-S811	1
6	215-127-PPP	SHELF, PRINTER	1
7	11-1054-1-PPP	SUPPORT ASSEMBLY USB S811	1
8	132-161-1-PPP	DOOR ASSEMBLY-RADIUS S811	1
9	73-993-PPP	PANEL, REAR S811 USB	1
10	142-104-2	HANDLE, PULL W/ LABEL INSET	1
11	160-46-2	HINGE, DOOR R611	2
12	144-54-2	LOCK, CAM TYPE	1
13	144-21-2	LATCH, DOOR	1
14	135-144-2	PIN, STRIKER	1
15	48-56-2	RIVET, BLIND 3/16 X 1/4 INCH	35
16	75-23-2	HEX HEAD CAP SCREW 1/4-20 X .50 INCH	6
17	48-57-2	RIVET, BLIND 5/32 X 1/4 INCH	12
18	75-669-2	SCREW, THREAD FORMING FOR PLASTIC	2
19	48-83-2	RIVET, DRIVE 3/16 NYLON	2
20	76-415-2	NUT, HEX INSERT 10-32	10
21	76-414-2	NUT, HEX INSERT 1/4-20	4
22	76-262-2	NUT, LOCK 8-32 NYLON INSERT	1
23	76-85-2	NUT, KEPS 1/4-20	6
24	30-422-1	CONSOLE, PA100	1
25	94-23-2	TIE, HOLDER SNAP IN (Not Illustrated)	2
26	94-11-2	TIE, CABLE (Not Illustrated)	2
27	37-504-1	WIRE ASSEMBLY, USB BOX SENSOR CHARGE (Not Illustrated)	1
28	37-385-1	WIRE, 18 BATTERY CHARGER P211M (Not Illustrated)	1
29	77-67-2	WASHER, FLAT 1/4 INCH	4
30	75-413-2	SCREW, SELF TAPPING SCREW 10-32 X .50 INCH HEX WASHER HEAD	6
31	171-196-PPP	PANEL, REAR UPPER	1
32	75-29-2	HEX HEAD CAP SCREW 1/4-20 X .75 INCH	4
33	69-1046-002	COVER, RECHARGE WIRE S511	2
34	75-311-2	TRUSS HEAD SHEET METAL SCREW 8 X 3/8	6
35	113-199-2	BUSHING, HEYCO #2420	3
36	43-108-2	PLUG, 1/2 INCH DIAMETER HOLE	1
37	69-1031-2	COVER, NETWORK CUTOUT	1
38	51-1960-PPP	PLATE, INNER DOOR	2
39	69-1188-PPP	COVER, USB COVER POWER INLET	1
40	75-311-2	TRUSS HEAD SHEET METAL SCREW 8 X 3/8 INCH	4
41	11-1066-005	SUPPORT, STRAP PLUS	1
42	38-1031-1	CABLE, MOLDED MULTI WITH CONNECTOR	1
43	75-359-2	PAN HEAD MACHINE SCREWS 6 X 3/8 INCH TRILOBULAR	2
44	158-82-2	WHEEL, CABINET CASTER PACKAGE (Consisting Of:)	1
45	158-58-2	CASTER, PLATE	2
46	158-57-2	CASTER, PLATE WITH BRAKE	2
47	134-93-2	STUD, PRESS IN 5/16-18 X 3/4 INCH	16
48	76-177-2	NUT, KEPS 5/16-18	16
49	20-1865-1	KIT, HOLE PLUGS ALIGNER CABINET (Consisting Of:)	1
50	43-125-2	PLUG, HEYCO 2617, 3/8 INCH BLACK (Not Illustrated)	8
51	43-126-2	PLUG, FASTEX .197 INCH HOLE (Not Illustrated)	32
52	128-1237-2	DECAL, HUNTER	1



**PA100/131 MOBILE CABINET**  
REFER TO NEXT SHEET FOR PARTS DESCRIPTION LISTING

## PARTS DESCRIPTION LISTING

Index No.	Part Number	Description	Qty.
1	178-25-2	COUPLING SENSOR DSP500 RECHARGE (Consisting Of:)	1
2	37-516-1	WIRE ASSEMBLY DSP500 RECHARGE NEGATIVE	1
3	47-64-2	INSULATOR DSP500 RECHARGE	1
4	77-115-2	WASHER FIBER 6	1
5	76-19-2	NUT GRIP 6-32	2
6	37-515-1	WIRE ASSEMBLY , DSP500 RECHARGE POSITIVE	1
7	75-587-2	SCREW SELF TAPPING SCREW 8-32 X 1/4 PH PR	1
8	75-623-2	SCREW FLAT HEAD MACHINE SCREW 6-32 X .75	1
9	69-1112-2	COVER CHARGING TERMINAL 69	1
10	117-178-1	HANGER, DSP500 DIE RIGHT FRONT LEFT REAR W/ RECHARGE (Not Shown)	1
OR	117-179-1	HANGER, DSP500 DIE RIGHT FRONT LEFT REAR W/ RECHARGE (Not Shown)	1
OR	117-181-1	HANGER, DSP500 DIE RIGHT FRONT LEFT REAR W/ RECHARGE (Not Shown)	1
OR	117-180-1	HANGER, DSP500 DIE RIGHT FRONT LEFT REAR W/ RECHARGE (Consisting Of:)	1
11	117-172-2	HANGER, SENSOR DSP500	1
12	69-1057-011	COVER, DSP500 HANGER PAINTED	1
13	75-693-2	SCREW, SELF TAPPING SCREW 8-32 X 1/4 INCH HEX WASHER HEAD	4
14	178-26-1	COUPLING, ASSEMBLY DSP500 RECHARGE	1
15	75-603-2	FLAT HEAD SOCKET CAP SCREW , #10-32 X 1.38 INCH	2