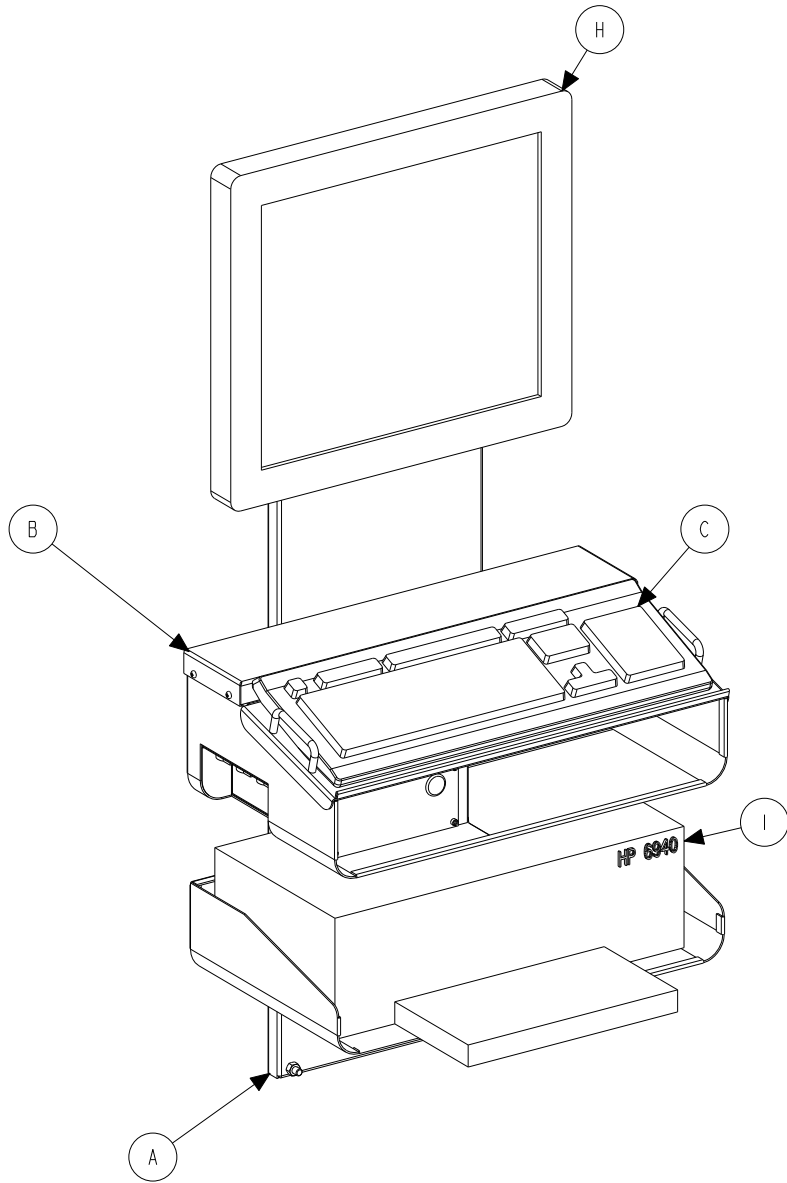


PA121 CONSOLE ALIGNMENT SYSTEM

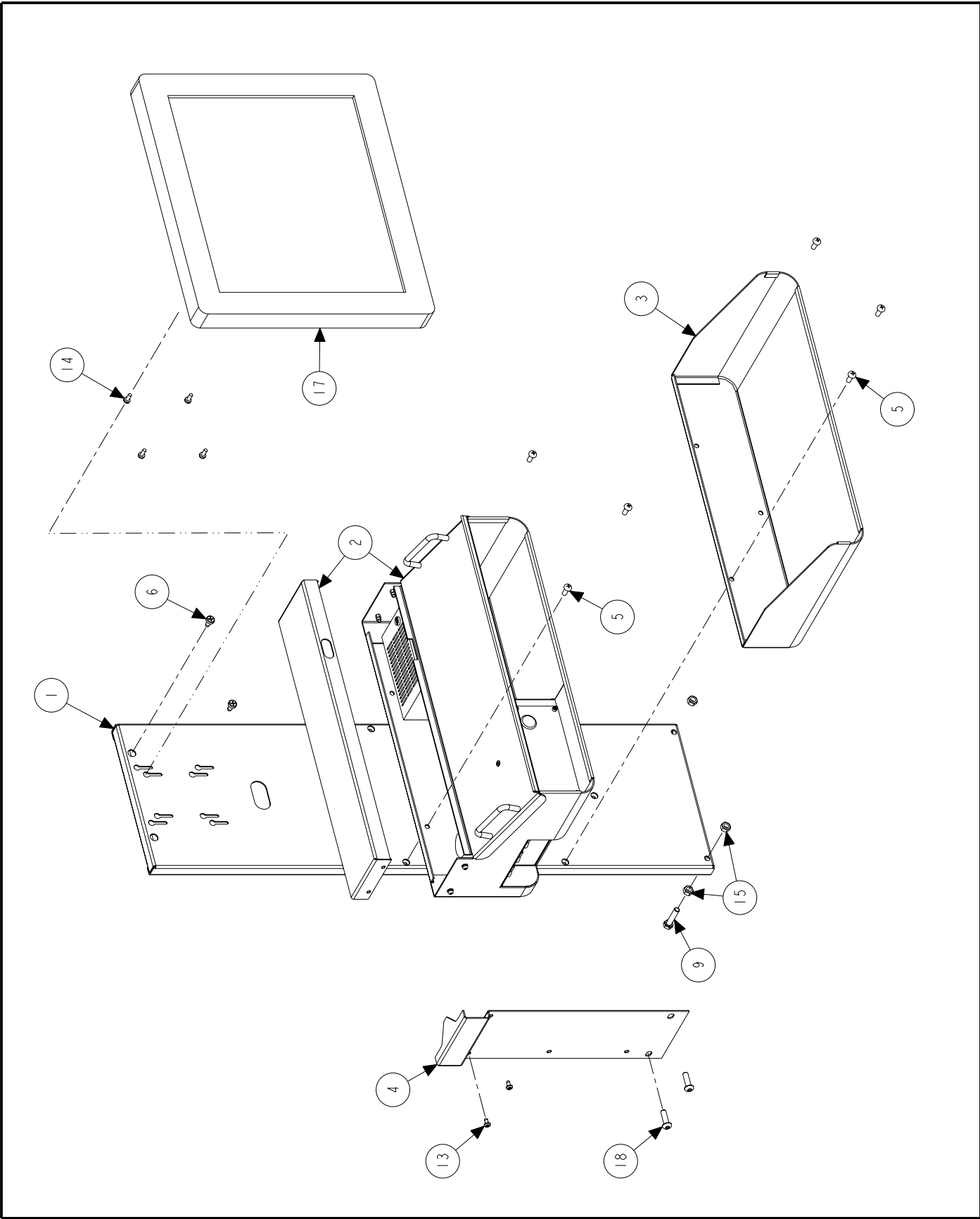
© 2009 Hunter Engineering Company



PA121 CONSOLE ALIGNMENT SYSTEM
REFER TO NEXT SHEET FOR PARTS DESCRIPTION LISTING

PARTS DESCRIPTION LISTING

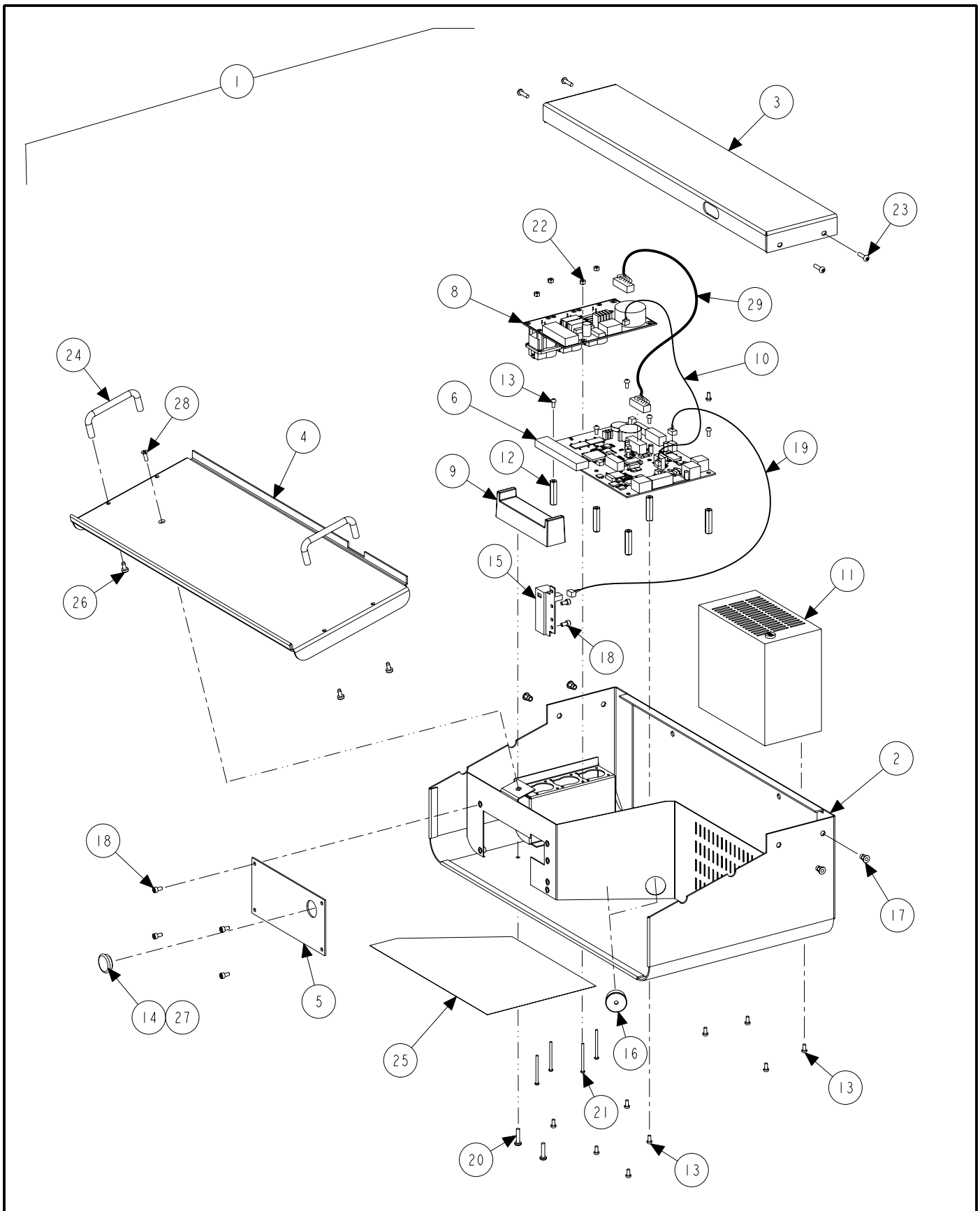
Index No.	Part Number	Description
A	11-1257-1-005	SUPPORT, PA100 SYSTEM MOUNT ASSEMBLY (Refer to Sheet 3)
B	105-536-1	HOUSING PA100, PCB, ASSEMBLY (Refer to Sheet 4)
C	18-512-1-00	SWITCH, ALIGNER KEYBOARD USB
D	232-233-2	ELECTRICAL ASSEMBLY, USB MOUSE OPTICAL (Not Illustrated)
E	146-55-1	CONTROL ASSEMBLY, REMOTE WITH ZOOM (Not Illustrated)
F	WA15-S	BRAKE PEDAL DEPRESSOR (Not Illustrated)
G	28-75-1	HOLDER, STEERING WHEEL (Not Illustrated)
H	227-89-2	DISPLAY, 17 LCD
I	167-92-2	PRINTER, HP HIGH SPEED USB



PA121 CONSOLE ALIGNMENT SYSTEM
REFER TO NEXT SHEET FOR PARTS DESCRIPTION LISTING

PARTS DESCRIPTION LISTING

Index No.	Part Number	Description	Qty.
1	11-1257-1-005	SUPPORT, PA100 SYSTEM MOUNT ASSEMBLY	1
2	105-536-1	HOUSING, PA100 PCB ASSEMBLY	1
3	215-142-005	SHELF, PA100 PRINTER	1
4	104-160-005	GUIDE, PA100 CABLES	1
5	75-132-2	ROUND HEAD MACHINE SCREW 1/4-20 X .63 INCH	6
6	75-599-2	SCREW, SELF-TAPPING 1/4-20 X .50 INCH	2
7	94-23-2	TIE, HOLDER SNAP-IN (Not Illustrated)	4
8	94-11-2	TIE, CABLE (Not Illustrated)	4
9	74-51-2	HEX HEAD CAP SCREW 5/16-18 X 1.50 INCH	2
10	38-1088-2	CABLE, USB EXT 6FT (Not Illustrated)	1
11	38-1030-2	CABLE, POWER CORD MULTI IEC (Not Illustrated)	1
12	38-428-2	CABLE, 18/3 SO/STO CONSOLE POWER (Not Illustrated)	1
13	75-522-2	SCREW, SELF-TAPPING 10-32 X .38 INCH	2
14	75-679-2	PAN HEAD MACHINE SCREW M4 X .7 X 16MM LONG	4
15	76-37-2	NUT, HEX 5/16-18	4
16	38-954-2	CABLE, USB A-TO-B (Not Illustrated)	1
17	227-89-2	DISPLAY, 17 INCH LCD	1
18	74-270-2	SOCKET BUTTON HEAD CAP SCREW 5/16-18 X 1 INCH (Sensor Column Hardware)	2



P121 CONSOLE ALIGNMENT SYSTEM
 REFER TO NEXT SHEET FOR PARTS DESCRIPTION LISTING

PARTS DESCRIPTION LISTING

Index No.	Part Number	Description	Qty.
1	105-536-1	HOUSING, PA100-PCB-ASSEMBLY	1
2	105-535-1-005	HOUSING, PA100 PCB WELD	1
3	53-161-005	CAP, PA100 HOUSING	1
4	215-143-005	SHELF, PA100 KEYBOARD	1
5	171-224-005	PANEL, CARTIDGE ACCESS	1
6	45-1111-1	PCA, ROCK HOPPER CONSOLE	1
7	194-24-2	BATTERY, COIN CELL 3V (Not Illustrated)	1
8	45-1139-1	PCA, ROCK HOPPER POWER	1
9	104-155-2	GUIDE, PROGRAM CARTRIDGE	1
10	37-558-1	WIRE ASSEMBLY, BEEPER 9200	1
11	232-154-2	ELECTRICAL ASSEMBLY, ATX POWER SUPPLY	1
12	46-576-2	SPACER, 5/16 HEX 1.25 INCH LONG 6-32 THREAD	6
13	75-162-2	ROUND HEAD MACHINE SCREW 6-32 X .31 INCH	16
14	69-685-2	COVER, REMOTE RECEIVER	1
15	45-911-1	PC ASSEMBLY, IR RECEIVER, SMT	1
16	113-253-2	BUSHING, HEYCO 2137	1
17	76-443-2	NUT, HEX INSERT 8-32	4
18	75-306-2	SOCKET HEAD CAP SCREW 8-32 X .31 INCH	10
19	38-761-1	CABLE, P111/P211 REMOTE RECIEVER	1
20	75-472-2	SCREW, SELF-TAPPING 8-32 X .75 INCH	2
21	75-384-2	ROUND HEAD MACHINE SCREW 4-40 X 1.50 INCH LONG	4
22	76-366-2	NUT, LOCK 4-40 NYLON INSERT	4
23	75-80-2	ROUND HEAD MACHINE SCREW 8-32 X .63 INCH	4
24	142-154-2	HANDLE, ROUND ALUMINUM	2
25	64-161-2	PAD, MOUSE, CABINET MOUNT	1
26	75-446-2	SCREW, SELF-TAPPING 8-32 X 3/8 INCH	4
27	124-45-2	SEAL, O RING, #2-117	1
28	75-202-2	FLAT HEAD MACHINE SCREW 8-32 X .50 INCH	1
29	38-1027-1	CABLE ASSEMBLY, INTERCONNECT PA100	1